



Australian
National
University



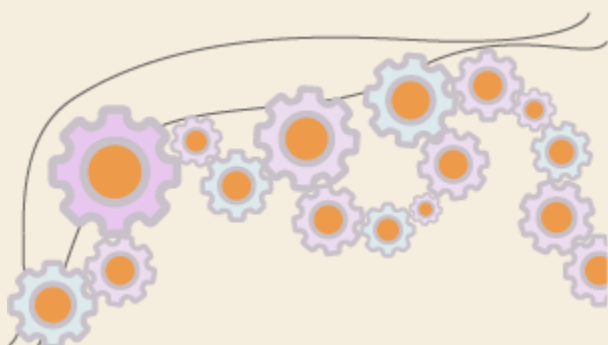
The Network for Early Career Academics at ANU



ANU NECTAR CO-Chairs Elected»

Congratulations to Shaam (2nd term), Mina, Naomi and Nikolay who have been elected to chair NECTAR as your representatives! Co-Chairs will lead the network on behalf of all ECAs and give NECTAR a strong voice in academic governance. Learn more about the new Co-Chairs and [their visions for NECTAR.](#)

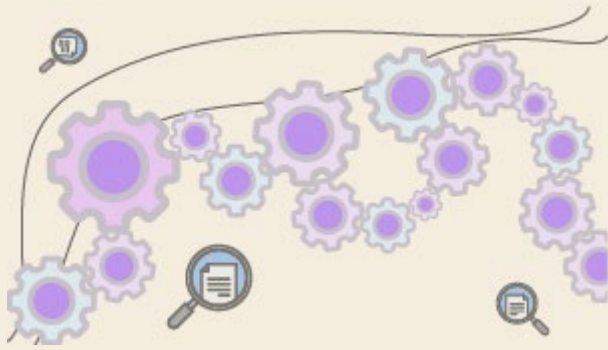
A big thank you to the outgoing Co-Chairs: Ian Carter, Bin Lu and Hieu Nguyen. Thank you for your contributions and leadership!



How to..? in 30 minutes»

Finding it hard to make time for those professional development activities to advance your academic career? We've got you covered: we are featuring academic life hacks in our 30 minute "How to" series.

Details below.

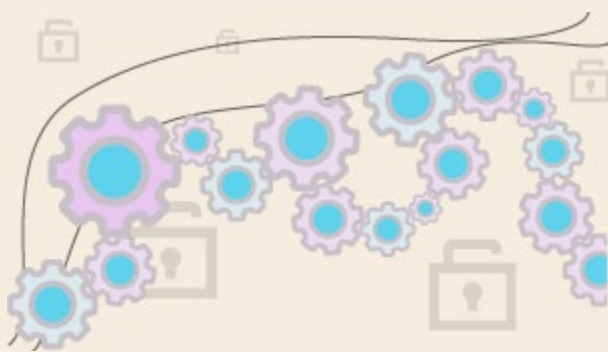


How to get the most out of Research Support at ANU?»

Wed 28 September – 3.30-4pm

If you have ever applied for a grant at ANU you will know it's not always a simple process. Why is there so much administration around funding applications? In this session you will learn about the structure of research support and receive tips on how to work with research support staff for the best possible results in your funding applications.

Register [here](#).



How to publish for free in open-access journals?»

Wed 5 October – 3.30-4pm

Did you know that ANU researchers can publish in open-access journals for free? How does it work? Join us for a 30 minute session to find out more.

Register [here](#).



VC Awards and EMCR Support»

ANU NECTAR is working on two submissions, one on requests to improve the VC awards, due this week, and another on what EMCRs want in terms of support and opportunities. Send your comments and ideas to nectar@anu.edu.au, call us (+61 2 6125 7165), or come to the EMCR walks on Wednesdays at 1pm and have a chat to Sophie (meeting at the end of Joplin Lane).



Co-creating value via cultural practice research»

Thu 13 October – 11.30am-12.30pm

Brought to you by the ANU Knowledge to Action (KTA) Community of Practice, our fourth conversation for 2022 is with Dr Maya Haviland, Translational Fellow and Senior Lecturer in the Centre for Heritage and Museum Studies, and Professor Mitchell Whitelaw from the School of Art & Design. This event will be hosted by Sejul Malde, Research

Manager from the College of Arts & Social Sciences.
Register [here](#).



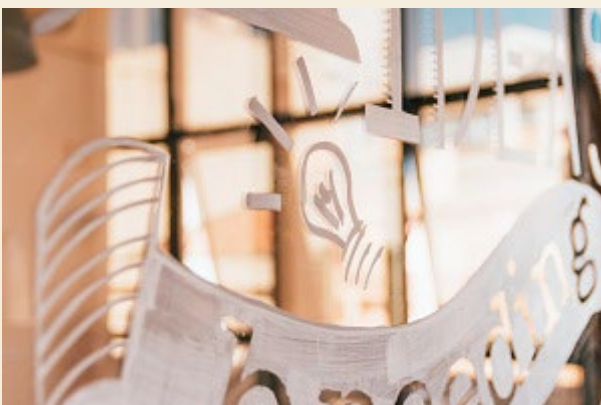
Lunch Vox #7: Teaching First Year Undergraduates at ANU»
Thu 13 October – 12.15-1.15pm

First year teaching can be challenging when compared to teaching later year courses. This session will explore the initiatives and practices first-year conveners enact to support students in their ‘transition’ to the ANU. Find out more and [register here](#).



Managing Projects with Industry and Government »
Thu 20 October – 3-4pm

Are you an ANU academic or professional staff thinking of running a project contracted by an Industry or Government client? This information session brought to you by ANU Enterprise introduces how to set up a project for success. We will examine short term, long term and ongoing projects, complex and straightforward arrangements. We provide tips on receiving help running, administering, staff and budgeting for your project for ANU. Register [here](#).



ANU Incubator Hub»

ANU is proud to announce its new INCUBATOR HUB. A bricks-and-mortar shopfront right in the heart of ANU-Joplin lane. If you are an up-and-coming entrepreneur or if you desire to test your products in a business setting but are not ready for the financial commitment of a shop front? This is for you!
To get started, just contact Commercial Services with your idea/proposal at commercial.services@anu.edu.au or call +61 2 6125 0878.



The Cotton Research and Development Corporation (CRDC) funding round open »

CRDC's 2023-24 investment round has opened. The EOIs cover a range of critical cotton research priorities - from developing innovative solutions to solve evaporation, to understanding the greenhouse gas emissions of textile waste in landfill compared to processing and composting. More information [here](#).



Join the NECTAR Custodians» **Next meeting 13 October – 2-3pm**

Are you an ECA? Would you like to help shape and drive the ECA experience at ANU? The NECTAR Custodians and Co-Chairs meet regularly to discuss issues, share ideas and lead NECTAR.

Keen to join the team? Submit your EOI [here](#) or contact the NECTAR team.

Do you have news to share?»

Announce your event, workshop, book launch or initiative on the NECTAR newsletter. Submissions [here](#), first day of each month.

Subscribe to The Early Career Academic»

The NECTAR newsletter The Early Career Academic is open to all but not everyone gets it. Please forward this to your colleagues and invite them to join NECTAR!