



Australian  
National  
University



## The Network for Early Career Academics at ANU



### Developing your research career beyond academia»

Thursday 10 November – 10am-12pm

Do you want to do research with, or for people in non-academic organisations? Presenter Zoe Piper, an entrepreneur with extensive experience working with government & businesses, will help you get started. Zoe regularly mentors' researchers with an interest working outside academia, including via IMNIS (STEM PhD students looking to work in industry) and CSIRO's ON Prime program (supporting researchers to commercialise their research). This workshop will condense advice that she regularly gives mentees looking to secure opportunities outside academia. It will include new models which work, communicating as an expert with non-academic audiences, and engaging and building connections beyond academia.

[Register here.](#)



### ANU Classics museum tour for EMCRs»

Tuesday 8 November – time

NECTAR members and ANU Early and Mid-Career Researchers (EMCRs) are offered a bespoke tour of Ancient Roman artifacts and more at the ANU Classics Museum collection, led by the new Curator Dr Georgia Pike-Rowney. This catered social event includes a tour of the collection and a briefing on how academics at the ANU can engage with the museum's collection for

their research and teaching, or purely for their own curiosity.

Register [here](#).

### **How not to go crazy as a researcher? - in 30 minutes»**

**Thursday 17 November – 9.30-10am**

Being an early career academic can be intense at times. Join us for a 30-minute session to hear from Michelle Linmore from ANU counselling who will present about practical methods and tools that you can use when feeling under pressure.

Register [here](#).

### **How to plan grant budget? - in 30 minutes»**

**Tuesday 22 November – 9.30-10am**

Grant budgets are often a small part of the proposal with a big impact. Writing the budget can be time consuming, especially if you are not sure how to structure it and make a good case. Join our 30-minute session to learn tips and tricks from Kelsey Scarlett from ANU Research Office.

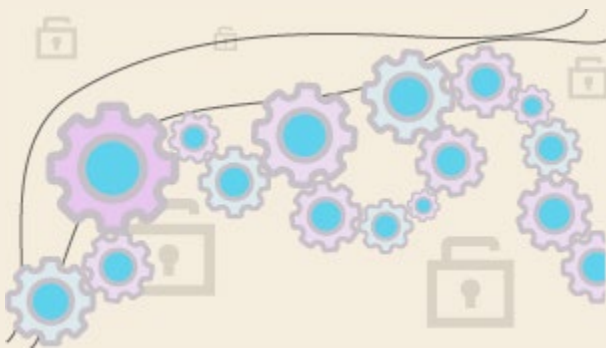
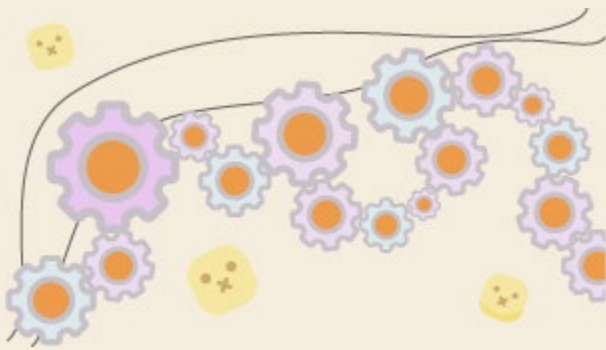
Register [here](#).

### **Knowledge to Action at ANU»**

**Tuesday 15 November – 1-3pm**

Between December and February over 50 ANU staff shared their experiences and insights about achieving research impact at the ANU. On November 15 we will be sharing some initial insights from that rich data set in a 2-hour online workshop. In addition we will be asking you to contribute to planning the next steps for transforming these findings to support impactful research at the ANU.

Register [here](#).





### **Monitoring Health Outcomes using Small Area Estimation»**

**Wednesday 16 November – 9am-5pm**

This one-day symposium is your chance to hear from statisticians and translation experts on monitoring health behaviours and outcomes ranging from smoking to cancer. Morning tea and lunch will be provided. Register [here](#).

### **SHAPE Futures»**

SHAPE Futures Network is an exciting initiative to strengthen the humanities, arts and social sciences in Australia by fostering a peer network, promoting opportunities, and giving a national voice to Early- and Mid-Career Researchers (EMCRs). More information [here](#).



### **Introducing Charlie Morgan as EMCR Forum rep for ANU NECTAR»**

Charlie recently moved to ANU and is the ANU NECTAR rep to the EMCR Forum. Similar to SHAPES, see above, the Forum champions improvement in the national research environment for EMCERs. He encourages those who identify as Early to Mid-Career Researchers [in STEM] to consider becoming an EMCR Forum member through joining [here](#) for free.



### **School of Art & Design Graduating Exhibition!»**

**25 November - 4 December**

You are invited to the School of Art & Design 2022 Graduating Exhibition. Public opening is on Friday 25 November, 6 - 8pm and Emerging Artist Support Scheme Awards will be announced from 6:30pm. There will be food and drinks available to purchase from local vendors. Visit us at ANU School of Art & Design, building 105. More information [here](#).



### **ANU Futsal Club EOI open»**

Ever wanted to try futsal or continue playing? ANU futsal club hosts social sessions for beginners to experience players. The sessions run with winner stays on a round robin style. Games last a maximum of 5 minutes. This allows equal game time while letting you play with everyone who attends the session.

Expression of interest form [here](#).



### **ARC grant writing and Q&A session** **Wednesday 16 November – 1-3pm**

The Australian Academy of Science's Early- and Mid-Career Researcher (EMCR) Forum is hosting an interactive session with the ARC on improving grant outcomes for EMCRs. This 2-hour online workshop will discuss the current priorities of the ARC, including the ARC's view on funding fundamental research and supporting career mobility, as well as provide advice on writing the National Interest Test (NIT) statement and ROPE statements.

Register [here](#).



### **European Research Days 2022 -** **Australia & New Zealand»**

**7-11 November**

This event focuses on providing the research community with information and support for scientific exchange and collaboration with Europe. The ERD is a (free) virtual event structured into 5 days – 2 hours each day. More information and agenda [here](#).



### **Swiss Government Excellence** **Scholarships for Foreign Scholars»**

**Applications close 30 November**

Each year the Swiss Confederation awards research scholarships to post-graduate researchers holding a master's degree or PhD. Interested scholars can apply as a research fellowship, doctoral or post-doctoral student depending on their degree. Find more information [here](#). Questions? Get in touch with Mr. Sébastien Monnet at [canberra@eda.admin.ch](mailto:canberra@eda.admin.ch).



### **Join the NECTAR Custodians»**

Are you an ECA? Would you like to help shape and drive the ECA experience at ANU? The NECTAR Custodians and Co-Chairs meet regularly to discuss issues, share ideas and lead NECTAR.

Keen to join the team? Submit your EOI [here](#) or contact the NECTAR team.

### **Do you have news to share?»**

Announce your event, workshop, book launch or initiative on the NECTAR newsletter. Submissions [here](#), first day of each month.

### **Subscribe to The Early Career Academic»**

The NECTAR newsletter The Early Career Academic is open to all but not everyone gets it. Please forward this to your colleagues and invite them to join NECTAR!

The Australian National University, Canberra | CRICOS Provider : 00120C | ABN : 52 234 063 906

If you do not wish to receive future emails from us, please [unsubscribe](#). Alternatively, click [here](#) and unsubscribe under "Nectar\_list Subscribers".