



Australian  
National  
University

News, funding, networking and  
professional development for EMCRs

Curated by NECTAR volunteers & staff

June 2023



# NECTAR

The Network for Early Career Academics at ANU

## News and Updates

It's been some time since the last NECTAR e-newsletter. Our team has undergone some changes and there have been some important announcements affecting early and mid-career researchers at ANU. **Read on for updates, or scroll down to find new and upcoming funding rounds, networking events, competitions and professional development opportunities** for EMCRs at ANU.

### Early-Career Researcher Travel Grant restored!

First, earlier this year NECTAR hosted a roundtable with NECTAR members and the ANU heads of Research & Innovation, Higher Degree Research, Research Initiatives, and Infrastructure and Business Development. As a direct result of this conversation, the ANU Executive, led by Deputy Vice-Chancellor (Research and Innovation) Professor Keith Nugent, **restored the ECR Travel Grant on Thursday 11 May and it is now open for rolling applications** (requires ANU login). Congratulations to all the NECTAR members who attended to make the case for this vital fund.

We welcome further efforts to make the case for the funds you need to succeed at our university, so get in touch if you have ideas! We are planning more meetings to follow up on our other requests, stay tuned.

### NECTAR joins Researcher Development Portfolio

As of April 2023, NECTAR is now a part of the Researcher Development portfolio under Professor Ann Evans and Professor Inger Mewburn. This means we are situated among the experts who lead the development and delivery of training and support programs for higher-degree researchers at ANU, and that we're just down the hall from ANU Careers. In the longer-term, we hope this new placement will allow

us (and ANU) to better bridge gaps and navigate overlaps between PhDs being awarded, career goals being articulated, and the early stages of employment at ANU.

## **NECTAR welcomes new staff**

**NECTAR is glad to welcome two new staff** to key roles in the team. As of May 2023, Ashley Thomson joins NECTAR as our new Administrator, with primary responsibility for our flagship Mentoring Program but also overseeing key Network communications, budgeting, outreach and so on. Also joining the team is Sean Perera as NECTAR Secretary, with primary responsibility for providing logistical and administrative support to the vital networks of NECTAR Co-chairs, College Custodians and Volunteers across the university. [Read more about our staff here.](#)

We hope that together, NECTAR's strategic integration into Researcher Development and full staffing will enable the Network to spend the remainder of 2023 working up to its pre-COVID capacity. Without abandoning lessons of flexibility and inclusivity learned since 2020, we envision more social events, more in-person professional development, and more opportunities for early and mid-career researchers at ANU to personally articulate their needs and vision to those in a position to improve things at our university.

## **New research ethics management system (REMS) going live**

The Research Ethics Management System (REMS) Board and Project team are pleased to advise that the rDNA component of the new research ethics management system called REMS is now live. REMS is a research ethics management system that will assist ANU researchers and committee members to manage all ethics dealings/applications and committee information and decisions electronically in one location. **The remaining two components of REMS will be implemented later this year.**

- Human ethics component – late June / July 2023

- Animal ethics component – August 2023

Additional rDNA ethics information can be found at the [Ethics SharePoint site](#). More information about the REMS project and the retirement of ARIES is [available here](#).

## **EMCR funding, networking and competitions**

### **Join the First Wednesday Connect**

The Canberra Innovation Network invites researchers along to their regular **monthly get-together** on the first Wednesday of the month, aiming to energise, share stories and encourage collaboration between entrepreneurs, researchers, investors and innovators. The next instalment will be on Wednesday 7 June in the city. It is free to attend, although registrations are essential. [More info.](#)

## CCDA Fund now open

The Carers' Career Development Assistance Fund is now open for applications, closing Friday 9 June. The CCDAF is for individual academic and professional staff with caring responsibilities who require support to participate in significant national or international conferences, workshops or symposia that contribute to their careers. [More info.](#)

## Win \$5,000 in the Early Career Researchers Competition

The Early Career Researchers Competition is the annual competition run by Cooperative Research Australia, celebrating research and challenging early career researchers to enhance their communication skills, receive peer reviews, and gain skills surrounding presentation of their research to a broad audience. **Introduce your project in one minute and you could win a trip to Adelaide to present your work at Collaborate Innovate 2023, 10-12 July, the annual conference of CRA.** First round applications close Friday 16 June. [More info here.](#)

## Join the ANU Disability Research Network

You can shape the development of the first ANU disability research network. The network brings together researchers across the university, including EMCRs and HDR students, to enable collaboration, capacity-building and information-sharing in disability research. If you are or have been involved in disability research and you would like to participate in the network, please complete [this short expression of interest form](#) (1 min). If you have questions or would like to discuss the network, email Dr Laura Davy: [Laura.Davy@anu.edu.au](mailto:Laura.Davy@anu.edu.au).

## Professional development opportunities



**Understanding your research career options: academic, non-academic (or refuse to choose!)»**  
**Wednesday 7 June**

This online session will help you understand the size and scope of the job market in your area(s) of expertise, and is designed to help you make smart, strategic choices to pursue your career goals. [Registration and more info here.](#)



## Showcasing Your Research in Documentaries and Exhibitions»

Tuesday 13 June – 2-3:30pm

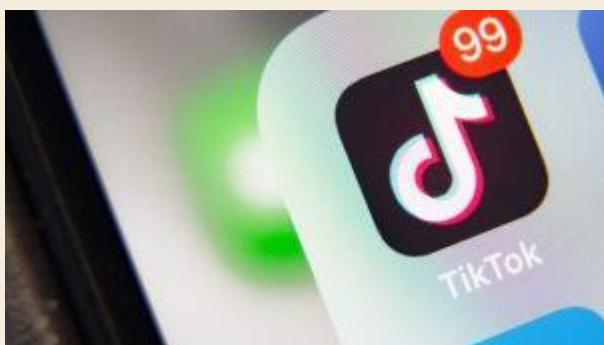
Exhibitions and documentaries have the potential to reach incredibly large audiences. This session will look at the skills necessary to get the most out of the worlds of documentaries and exhibitions. [Register here.](#)



## Respectful Relationships»

15-22 June – various times

The ANU Respectful Relationships Unit is always running industry-best training, and has upcoming workshops on understanding sexual violence, bystander intervention, and supporting student wellbeing and disclosures of sexual misconduct. [Follow and register for their workshops here.](#)



## From YouTube to TikTok: Making Short, Sharp and Effective Visual Presentations»

Tuesday 27 June – 2-3:30pm

If you want to capture the attention of an audience, striking visuals are the way to go. And if you really want to lodge your story deep in their memory, video is the way to do it. A look at the 'movie magic' of YouTube, Vimeo and TikTok and how you can use them to spread the word about your work. [Register here.](#)



## Exploring Learning and Teaching»

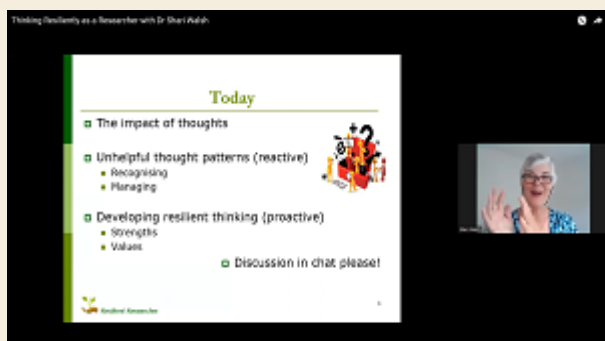
July / August – various times

In July and August the ANU Centre for Continuing Education is again running their ELT pedagogical masterclass, first in a week-long intensive format and then in August as a 5-week program. We cannot recommend this program highly enough. [Find out more and register here.](#)



## How to become a Consultant» Thursday 27 July, 3–4pm

This session provides an introduction to what is involved in becoming a consultant, how to professionally run personal consultancies under the University's Paid Outside Work Policy, and how ANU Enterprise can support you. [Register here.](#)



## In case you missed it »

Earlier this year NECTAR hosted psychologist and career practitioner Dr Shari Walsh for an **online workshop on 'Thinking Resiliently as a Researcher'**. The workshop can now be viewed on our YouTube page. Thanks to NECTAR member Amy Carrad for chairing. [Check it out here.](#)

## Subscribe to NECTAR e-newsletter »

Thanks for reading! Is there something we missed? Send in submissions to promote your research and EMCR events. Email [nectar@anu.edu.au](mailto:nectar@anu.edu.au).

The NECTAR e-newsletter is open to all, but not everyone gets it. Please forward this to colleagues and interested folks.

The Australian National University, Canberra | CRICOS Provider : 00120C | ABN : 52 234 063 906.

If you do not wish to receive future emails from us, please [unsubscribe](#). Alternatively, click [here](#) and unsubscribe under "Nectar\_list Subscribers".